

AES Survey Day at Knepp



Join us on **Saturday 21st May** for a day of entomology in the Knepp Wildland.

Start time: 10.00am – we will begin the day with a 30 minute presentation about the rewilding project and opening of the moth trap.

Finish time: 4.00pm

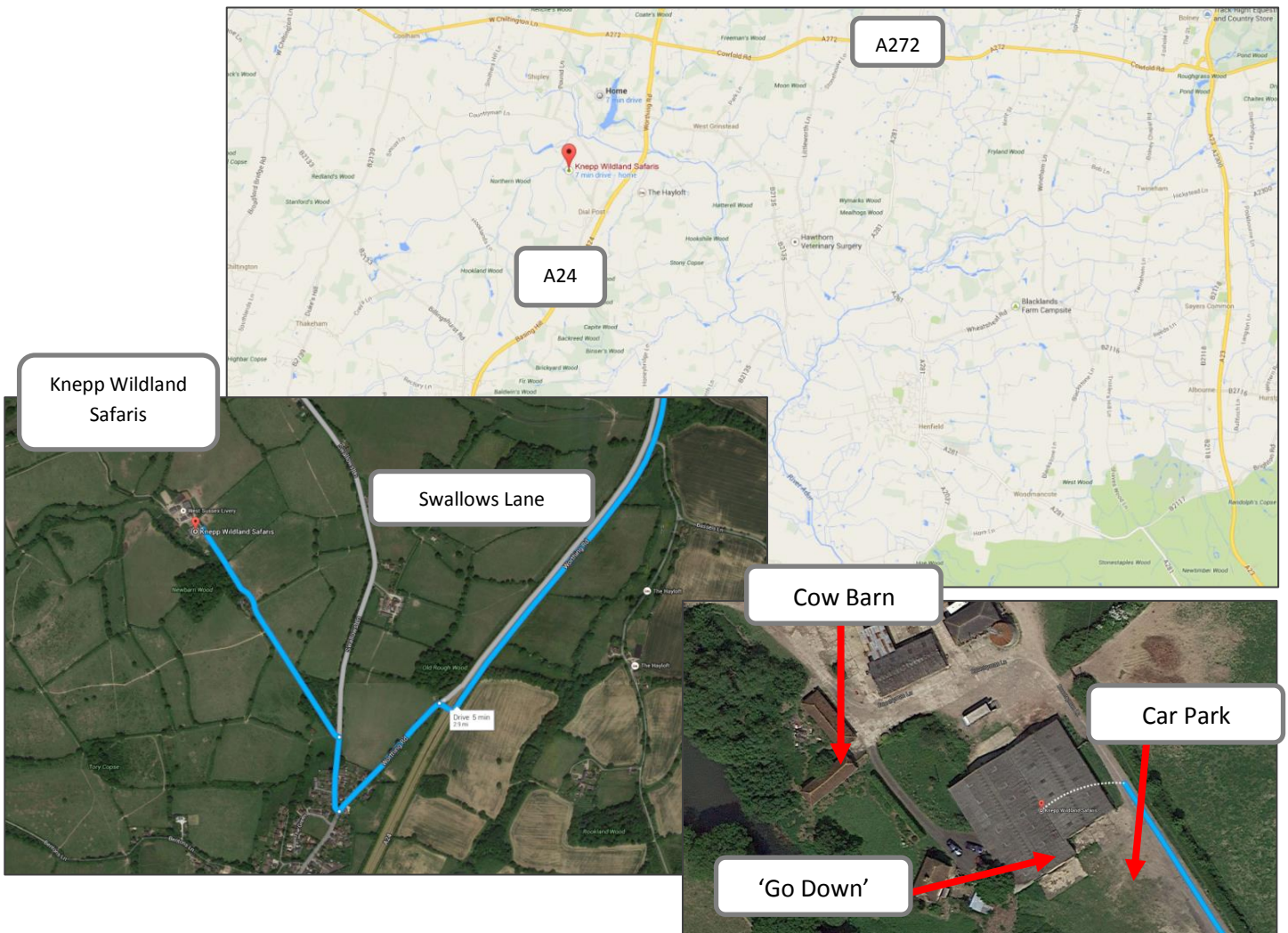
What to bring: Your survey equipment, camera, notebook, packed lunch, drink. No dogs please.

What to wear: Please be prepared for the British weather! The ground is uneven so wear sturdy waterproof boots or wellingtons. If it's really wet we will cancel the day, if you're not sure please call Penny to check before you leave home.

Meeting Location: The Cow Barn, Knepp Safaris, New Barn Farm, Swallows Lane, Dial Post, West Sussex, RH13 8NN

Parking: Parking is free in the Car Park at New Barn Farm

If you have any queries or are delayed on the day please call Penny on 07739 083650.



Our **re-wilding** project uses large herbivores to drive habitat changes across the Estate. The various herbivores cows, deer, horses and pigs - affect the vegetation in different ways helping to create a mosaic of habitats including open grassland, regenerating scrub, bare ground and forested groves. The Longhorn cattle create paths through scrub, spread seeds and create a distinct browse line, while the Tamworth pigs rootle up the ground looking for food. Exmoor ponies and deer also browse the sallow and other tree species, particularly the young saplings and seedlings, and strip bark, especially when food is scarce in winter.

For more information about the Knepp Wildland Project: www.knepp.co.uk

In return for a lovely AES day at Knepp we would be really grateful if you could send your data in to us – all **data** gets added to the Recorder 6 database here, which helps us evaluate how wildlife is responding to the project. The data then also gets passed on to the Sussex Biodiversity Record Centre and on to local and national schemes and societies.

On the day please could we record under the different field names, with site centroid grid references (which will be provided on the day) – and if you find something *really* exciting it would be great to have a more detailed grid reference please!

For those thinking of making this into a little adventure, then you may be interested to know that we have a **campsite** with both luxury camping and pitch-your-own camping – take a look at our website: <http://www.kneppsafaris.co.uk/Stay>